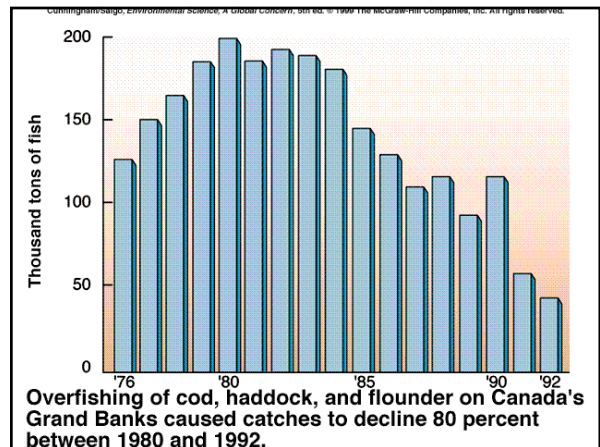
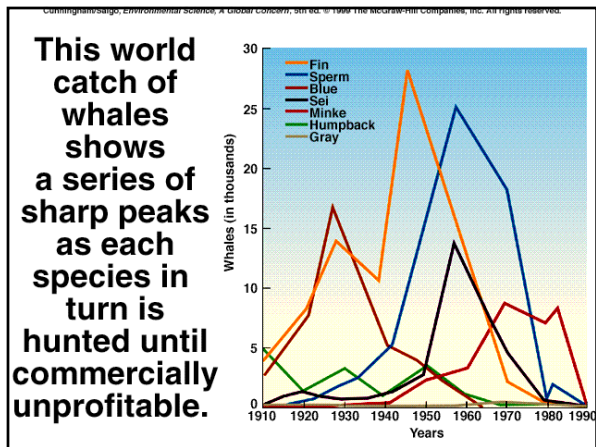
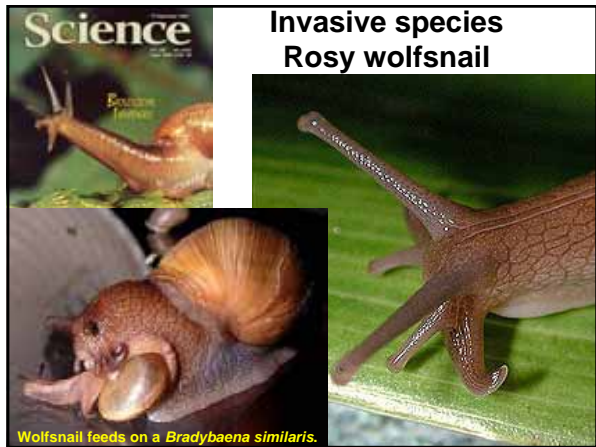
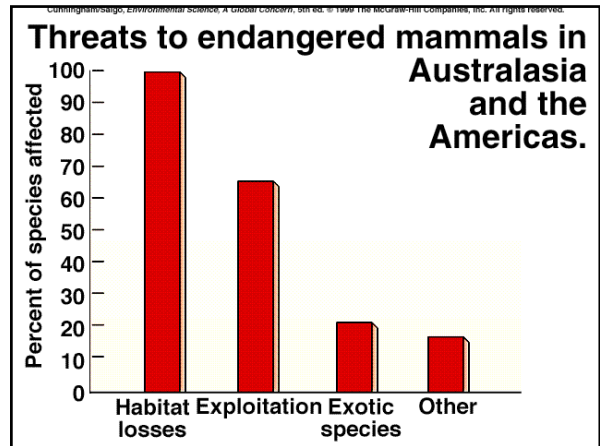
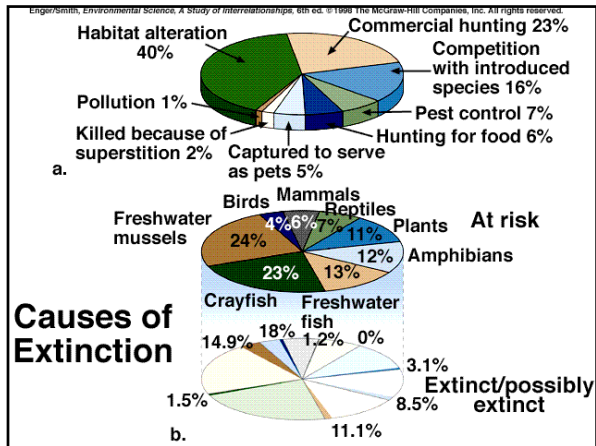
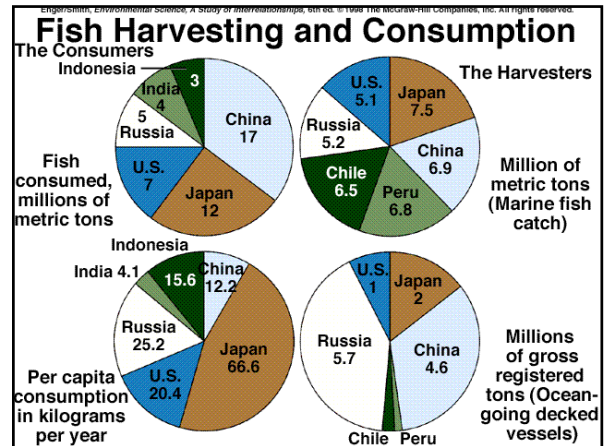
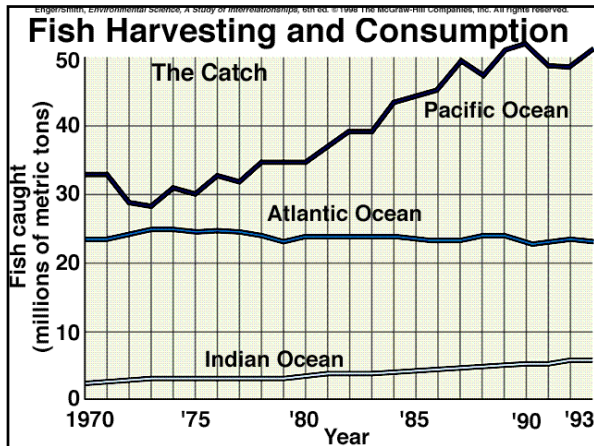


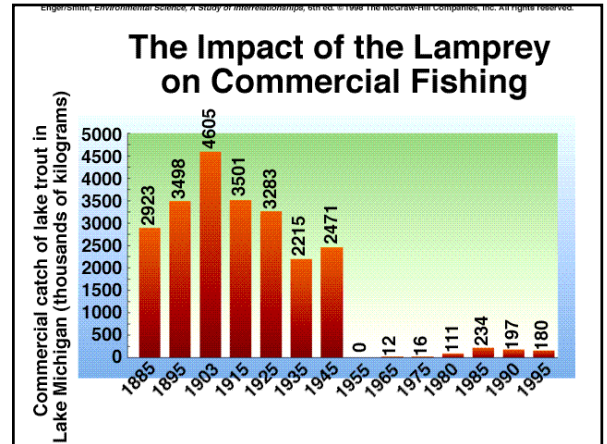
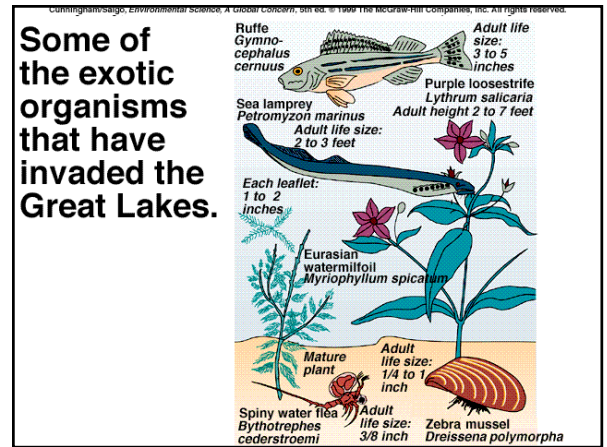
Introduction to Environmental Science 12:008/159:008
Spring 2002





Native and Introduced Fish Species in the Great Lakes

Native	Introduced
Brook lamprey	Sea lamprey
Lake trout	Brown trout
Brook trout	Rainbow trout
Whitefish	Pink salmon
Herring	Coho salmon
Ciscoes	Chinook salmon
Suckers	Atlantic salmon
Chubs	Carp
Shiners	
Catfish	
Bullheads	
	Smelt
	Alewife
White bass	White perch
Smallmouth bass	Crappies
Rock bass	Sunfish
Yellow perch	
Walleye	



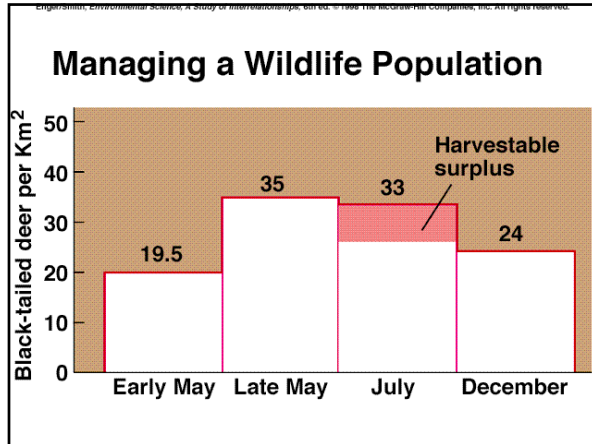


Table 18.4 Number of Threatened Species Monitored in Various Taxonomic Groups
Percent of Threatened as Based on IUCN Classification of Threatened and Endangered Species

	Number of Described Species	Number of Species Evaluated in 2002	Number of Threatened Species in 2000	Number of Threatened Species in 2002	Number of Threatened Species in 2002 as % of Species Evaluated (% Evaluated)
Invertebrates					
Arthropods	4942	4276	1231	1137	27% (27%)
Mollusks	9522	9622	1243	1194	12% (12%)
Reptiles	4524	473	294	293	4% (62%)
Amphibians	3276	463	146	137	2% (29%)
Fishes	24,536	1522	252	242	1% (16%)
Subtotal	96,396	12,727	3807	3573	6% (28%)
Vertebrates					
Mammals	404,809	769	523	523	4.8% (27%)
Birds	74,009	2099	938	938	1% (18%)
Conifers	41,509	463	408	408	1% (18%)
Others	136,209	33	27	27	0.02% (22%)
Subtotal	1,196,236	3264	1856	1856	5.2% (18%)
Plants					
Mosses	23,009	93	86	86	0.5% (36%)
Ferns	13,025	289	—	111	3% (24%)
Gymnosperms	809	927	143	142	16% (16%)
Angiosperms	248,229	7724	3499	3394	3% (22%)
Nonvascular plants	36,209	792	293	293	1% (16%)
Subtotal	327,281	9796	3623	3224	3% (18%)
Others					
Lichens	35,009	2	—	2	0.02% (100%)
Subtotal	35,009	2	—	2	0.02% (100%)

