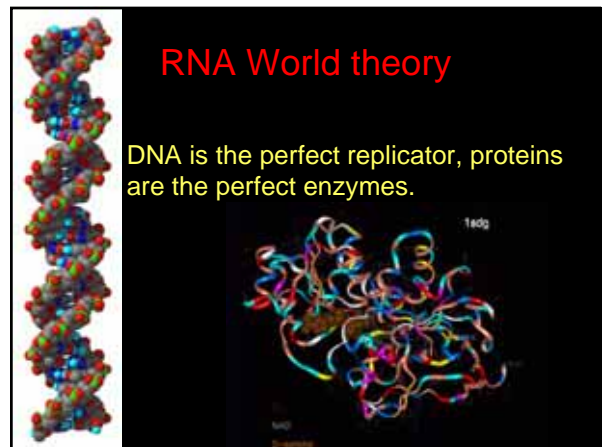
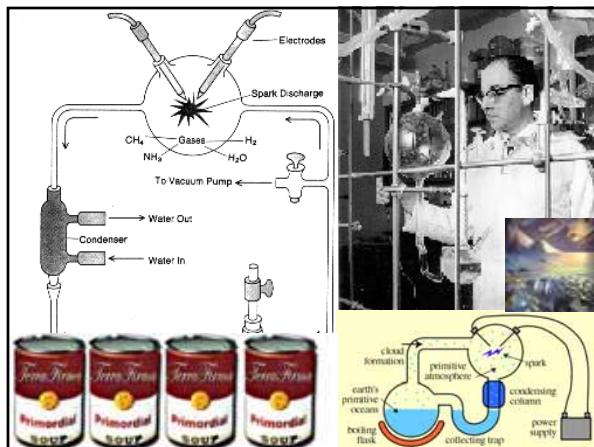
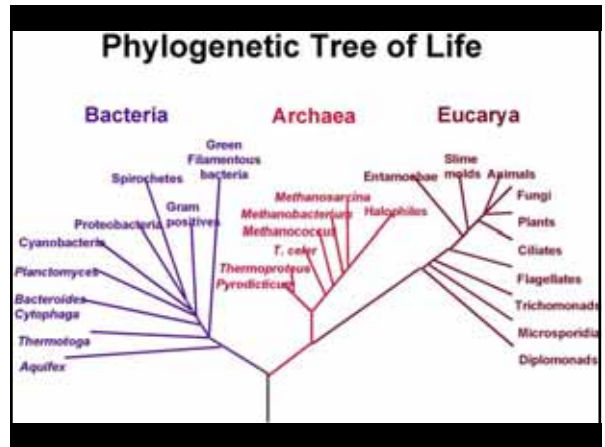
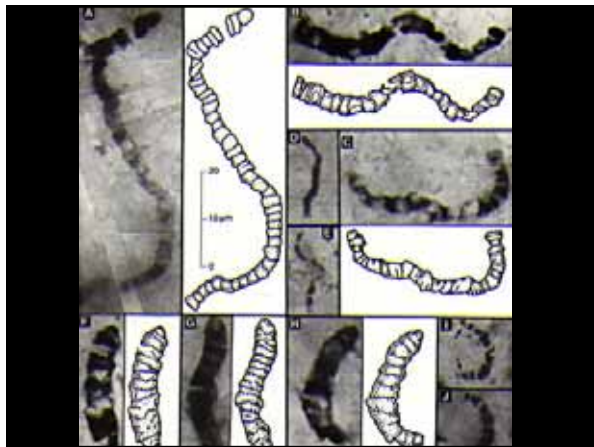
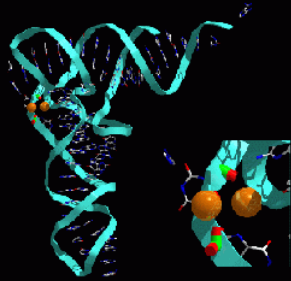


Earth Atm	%	Stability	Jupiter	Meteorites (avg)	Volcanoes (average)	Geysers & fumaroles
Nitrogen	78	stable	Methane	CO ₂	H ₂ O (73%)	H ₂ O (99%)
Oxygen	29	unstable	Ammonia	CO	CO ₂ (12%)	H
Argon	0.9	stable	Hydrogen	H	SO ₂	CH ₄
CO ₂	0.03	unstable	Helium	N	N	HCl
H ₂ O	Variable	unstable	Neon	SO ₂	SO ₃	HF
Ozone	trace	unstable		CH ₄	CO	CO ₂
Neon	trace	stable		NO	H	HS
He, Kr, Xe	trace	stable		CS ₂	Ar	NH ₄
H	trace	unstable		Benzene, Toluene	Cl	Ar, N
CH ₄	trace	unstable		Naphthalene, Anthracene		CO



RNA World theory

- RNA has a little bit of both properties.
 - A pretty good replicator and some shape versatility to act as an enzyme.



Metabolism first vs. Genes first

Could life have started with metabolism of organic compounds in sea vents?

